



# SUNDAY BULLETIN

Third Sunday of Advent

## THE LATEST FROM GPC:

Worship News

Updates from GB

Food Pantry

Angel Tree

Christmas Party

Christmas Eve Service

Volunteer  
Opportunities

Bible Study

Prayer List

Church Directory

Monthly Calendar



**\*Indicates time to rise as you are able.**

**We Gather**

<b>Prelude</b>	
<b>Welcome</b>	Rev. Doug
<b>Lighting Advent Candle</b>	
<b>*Opening Hymn</b>	<p><b>#175 We Light the Advent Candles (Verses 1 &amp; 4)</b></p> <p>We light the Advent candles against the winter night, to welcome our Lord Jesus who is the world's True Light, to welcome our Lord Jesus who is the world's True Light.</p> <p>Three candles now are gleaming and show us the true way, rejoice, the Baptist cries out, your Lord has come today, rejoice, the Baptist cries out, your Lord has come today!</p>
<b>Passing the Peace</b>	Rev. Doug
<b>First Reading</b>	<b>Zephaniah 3:14-20</b>   Ginny Warden
<b>Prayers of the People &amp; Lord's Prayer</b>	Rev. Doug
<b>Advent Doxology</b>	
<b>Second Reading</b>	<b>Luke 3:7-18</b>   Ginny Warden
<b>Message</b>	Rev. Doug
<b>*Song of Response</b>	<p><b><u>We Respond</u></b></p> <p><b>#244 O Love, How Deep, How Broad (verses 1-3)</b></p> <p>O Love, how deep, how broad, how high, how passing thought and fantasy: that God, the Son of God, should take our mortal form for mortals' sake.</p> <p>For us baptized, for us he bore his holy fast and hungered sore; for us temptations sharp he knew, for us the tempter overthrew.</p>

	<p>For us he prayed, for us he taught,  for us his daily works he wrought,  by words and signs and actions,  thus still seeking not himself, but us.</p>
<b>Invitation to Communion</b>	<p>The peace of the Lord be with you.....<b>And also with you</b>  Lift up your hearts.....<b>We lift them up to the Lord</b>  Let us give thanks to the Lord our God.....<b>It is right to give God our thanks and praise</b></p>
<b>Announcements</b>	Rev. Doug
<b>*Closing Song</b>	<p><b>#45 Mighty is Our God</b></p> <p>Mighty is our God, mighty is our King;  mighty is our Lord, Ruler of everything.</p> <p>Glory to our God, glory to our King;  glory to our Lord, Ruler of everything.  His name is higher, higher than any other name;  his power is greater, for he has created everything.</p> <p>Mighty is our God, mighty is our King;  mighty is our Lord, Ruler of everything.</p> <p>Glory to our God, glory to our King;  glory to our Lord, Ruler of everything.</p>
<b>Benediction</b>	
<b>Postlude</b>	

## Altar Flowers



**In memory of loved ones**

By Janet Andersen

## Coffee Fellowship



Join us for coffee hour after worship.

**Sunday, December 12**

Hosted by Ellen Green



## Meet Me Halfway

REV. DOUG CEDERBERG | DESIGNATED TERM MINISTER | DECEMBER 9, 2021

In the Bible verse James 4:2 we read, "You do not have because you do not ask God." The point of the verse is this: Meet God halfway; if you want something, you must take some responsibility – ask! Yes, even though God is all-knowing. Don't expect God to "just know" what you want. Ask and you'll receive.

This article is intended to drive home the same point with regard to your relationship with me. I have been in church ministry a long time. By this point, I have learned some important lessons, usually the hard way. In this article, I want to ask you to learn to ask me directly what you would like from me.

Specifically, many congregants like to have occasional visits or personal time with the pastor (though I have learned that some congregants are quite content without it). The hard part for me is that most congregants somehow think I have supernatural powers to "just know" who would like time with me. This has always puzzled me. I am sure that no congregant thinks his/her plumber "just knows" when that congregant's drain is clogged. No, the congregant takes the responsibility to call the plumber and make an appointment. But somehow when pastoral care is desired, the same congregant expects the pastor to mysteriously "just know". So, the congregant does not ask and the pastor's help is not received, because the truth is, I do not "just know" *until I have been asked*.

This often leads to resentment towards the pastor for supposedly not doing his job. I disagree with such resentment. My job is to spend time with those who want my help; my job is **not** to read minds. So, ask me to visit you, or call me and set up a visit with me at the church. Meet me halfway! If I say no, **then** I am not doing my job. I want you to know that in almost thirty years of ministry, I have never said no to any request for time with me. *So, meet me halfway and ask me.*

Please don't think I am chewing out GPC members. This

is a very common, universally human dilemma. I just read an article by a Harvard University professor written in response to students' complaints that Harvard professors are not spending enough time with them. He writes, "When this topic comes up, many of the faculty here, including myself, are reminded of the following old joke:

A deeply religious man, whom I will call Dave, finds himself in dire financial trouble. He prays earnestly to his God to help him out of his predicament. "God, I'm about to lose my car. Please help me. Let me win the lottery." Lottery night comes, but sadly, Dave is not the winner. Things go from bad to worse. Without a car to get to work, Dave loses his job. Without a job, his mortgage is foreclosed on, and he loses his home. Without a home, his wife leaves him, taking the kids. After each horrible step in the mounting crisis, he pleads with God to let him win the lottery, but he never does.

Finally, broke, hungry, living on the street, he tries again. "God, please, my life is a wreck. I have no car, no home, no family. Please let me win the lottery just this once so that I can turn my life around. I beseech you." Suddenly, a flash of light rends the sky, and the voice of God echoes down from the heavens. **"Dave, meet me halfway. Buy a ticket."**

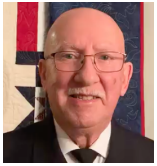
Professor Shieber concludes, "Many Harvard faculty, like God, wish that the students would meet us halfway. If you want interaction with Harvard faculty, ASK!"

In conclusion, *if the intelligent, capable students at Harvard need to ask when they want interaction with their professors, then so also do the intelligent, capable members of GPC need to ask when they want interaction with me.* Write me an email message or call me at church. I will respond.

*Doug Cederberg*

GPC Minister





## The Reason for the Season

DENNIS CHRISTO | GPC GOVERNING BOARD CHAIR | DECEMBER 8, 2021

**D**ear Congregation Family and Friends,  
The Governing Board wants to wish everyone, our GPC Congregation Family and Friends, a very **Blessed Advent**. We truly have much to be grateful for as God surely continues to bless us all. Let us remember the "Reason for the Season" as we prepare for the birth of our Lord and Savior. Let us have and share an **Attitude of Gratitude**, giving thanks to God for our blessings and the inspired guidance to overcome the problems and challenges of life. Also, let us continue to share the bounty and blessing we have. We are a Congregation that Loves and Serves God in many ways through our Faith In Action. We give generously through the many opportunities: Food Pantry, clothing drive, Thanksgiving Baskets, Angel Tree gifts for children, Hope for Housing support, Mustard Seed, Worcester Fellowship, Rainbow Development Center, and Veteran's Inc., just to name a few.

During last Sunday's church service in the Sanctuary, Bill Hackett lit the second Advent Candle, we enjoyed the music by our Choir and Director Annie Arsenaault, and Pastor Doug's inspiring message on **"The Word of the Lord."** Let us Praise the Lord!

We thank the Special Projects Team for their fundraisers: the Wreath Sale, the Poinsettia Sale, and the Mini-Fair (December 5th) with some food options: soup, chili, and chicken salad sandwiches. FYI: sales were brisk and resulted in over \$2,000 for the church. Thank You All for Your Support! See a more detailed Special Projects Team report elsewhere in the Newsletter.

You have all received the letter and Financial Commitment Card from our Stewardship Team to start this year's campaign program called: **"Be a Vehicle of God's Love."** Please take a few minutes to read the letter, and return the Declaration of Intention Form sometime soon in December. Your Pledges and Donations are essential for the Finance Team to prepare and execute our Annual Operating Budget. Please prepare, submit and be generous. Don't Forget, remember: it's a Communication Plan, not a Contract.

Here are a few notes from the recent Governing Board meeting:

**a.** The Annual Congregation Meeting is scheduled for Sunday, January 30, 2022. There will be important business to conduct. This will be a virtual and in-church congregational meeting. A meeting business ballot will be prepared with instructions for advance mail-in or submission during the church meeting. We will need a quorum.

**b.** As stated in my prior GB Notes, the Board has voted to convert the status of our Pastor, Rev. Dr. Douglas Cederberg from a 2-year term Intentional Minister to be our Settled Pastor. Our By-Laws require the congregation to vote on this important matter. This will be a ballot item for all to vote upon.

**c.** For many weeks earlier this year, the GB outlined a church Operational Concept called "The Way Forward" to guide the future course of action and direction for our church. This was a synthesis of months of work by the Mission Implementation Team tasked to recommend how to implement the years of work by the Mission, Vision, and Values Team, and the GB. This document and plan forward will be voted upon by the congregation.

**d.** In accordance with our By-Laws, there will be an election of three (3) GB members to replace the expiring term of 3 existing members. Anyone interested should submit their name to the GB Clerk, Kim Pare, of intention for a 2-year term, by 31 December 2021. This will be a ballot item for all to vote upon.

**e.** Our Annual Report (2021) will be prepared. All Church Teams are requested to submit their 2021 Annual Report Input to the Church Office by Friday, December 31, 2021, so we can prepare, collate, and distribute to the congregation in advance of the annual meeting.

**f.** The Treasurer and the Finance Team will present the Proposed Operating Budget for 2022.

**g.** The Board agreed to donate \$250 of our Hunger Action funds to Worcester Fellowship to support their food program. We are seeking your extra Congregation donations to match our donation by Christmas. Please make your special donation noting Worcester Fellowship to help needy community members.

**h.** The Board thanks the Christmas Angels who decorated the church, namely, Sherrill McKeon, Deb Richards, and Dot.

Blessings and Peace,

*Dennis Christo*

Chair, Governing Board.

## Food Pantry

Wednesdays | 10am | Parking entry



The Food Pantry has slowed down since Thanksgiving. However, folks coming in, continue to thank us for the delightful turkey dinner.

If you see a sale on canned vegetables we would appreciate it.

**As always thank you for your support!**

- The Food Pantry Angels -

## GPC Clothing Drive

Until December 16th, 2021 | Fisher Hall

We delivered five boxes of clothing to the Mustard Seed. Any other donations will be delivered to them on December 16th. Thank you for your donations!



## Angel Tree Mission 2021

Drop off Saturday, Dec. 11 | 10 am - 4 pm

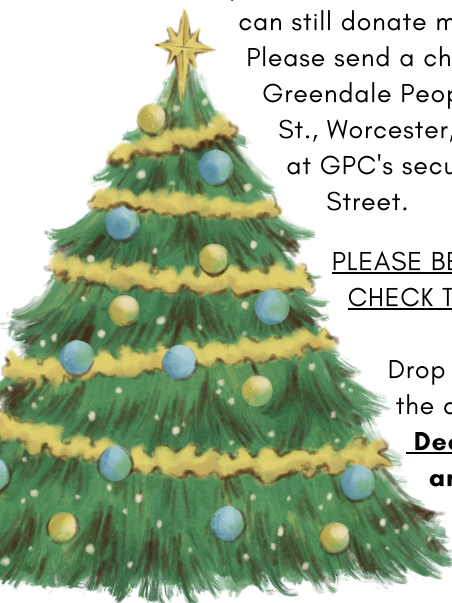


Every Christmas we partner with Rainbow CDC to donate new toys and clothing that matches children's "wish lists" to guarantee their Christmas is bright and memorable!

There were five children not picked from the tree. Gifts have been purchased for these children; however, you can still donate money towards the gifts. Please send a check (approx \$25.00) to Greendale People's Church, 25 Francis St., Worcester, MA 01606, or drop it off at GPC's secured mailbox on Francis Street.

PLEASE BE SURE TO PUT ON YOUR CHECK THE CHILD'S NUMBER.

Drop off all unwrapped gifts at the church by **Saturday, December 11 between 10 AM and 4 PM.**



## Mini Fair

Report



Thank you from the Special Projects Team for your support of our fundraises the past few Sundays. Thanks to Wreath Maker Team, and all who contributed with food, donated sale items, set up displays on tables, made the sales, and all who

purchased. The Christmas Wreaths and Poinsettia Plant Sale were a great success. The results from the in-house Church Mini-Fair are:

Food.....	\$128.75
Tables.....	\$851.00
Poinsetta's.....	\$249.00
Wreaths.....	\$790.00
Total.....	\$2,018.75

Awesome!!! A great result! Thanks to the great Teamwork and success.

**Note:** Bid items will be continued on Sundays for the next few weeks along with other table items as we are able. Blessings, Dot and Special Projects Team

## We welcome the Christmas Spirit into our church!



The Christmas spirit is about connecting with others through kindness, prayer and love, as we prepared our hearts for the coming into the world of Jesus Christ.

**Big thanks to Deb Richards, Dot Christo and Sherrill McKeon**

**for helping with the church decoration!**

May we live in the light of God's infinite love that fills our hearts with hope, joy, and kindness.

*Merry Christmas!*



# Christmas Eve Service



December 24, 2021  
5:30 pm  
Greendale People's Church  
Sanctuary



## Christmas Eve Service

Friday, December 24, 2021 | 5:30 pm | GPC Sanctuary

We are looking forward to this year's Christmas Eve celebration at Greendale People's Church. We will celebrate the birth of Jesus Christ with a candlelight service, Christmas carols, and a special message from Pastor Doug.

Christmas Eve is a great time to invite family and friends who don't regularly attend church, to celebrate the birth of Christ. Join us!

## Advent and Christmas donations!

Advent and Christmas Donations are now being accepted. If you are able, please make a donation for Advent and/or Christmas and remember to write "Advent" or "Christmas" on the memo line. Your help is always appreciated.



## 2022 Declaration of Intention Cards are in the mail!



The theme for this year is **"Be a Vehicle of God's Love."**

You are all so special to God and He has sent many blessings to all of us. Pray for discernment in knowing what to give. As each pledge card is received, a vehicle is added to our poster. Start with a small amount as a pledge.

Any amount is helpful.

With prayer and planning, God will help you to meet your pledge and go beyond. This is such an important step for the Financial Team in planning the budget. If you have any questions, please contact Karen Allen, Financial Secretary, at [karenallen2006@aol.com](mailto:karenallen2006@aol.com) or leave a message for her at the church office at 508.852.7727.

## Gifts for GPC staff

Please consider making a monetary gift to the staff by writing a check to GPC marking it with "Gift" on the memo line. All funds collected will be divided between Rev. Doug; Carolina, our Communications Director; Annie, our Music Director; and Kevin, our Sexton.

They all have contributed to a great reopening this year even with the continuing COVID pandemic. This is a small way to show our appreciation for all that they do. Thank you.



## Flower Chart for 2022 is posted!



Check the bulletin board outside of Fisher Hall to sign up for dedicating flowers for a Sunday in 2022. These are \$35 per Sunday. Please make your check to Greendale People's Church and write "Altar Flowers" on the memo line. These may be in memory of, in honor of, or in celebration of a person or event. Thank you for your continued support.





During this season of giving, we would like to invite you to donate to the Worcester Fellowship Christmas Fundraiser!

Your donations will provide homeless men

and women with the warmth and love that all people deserve – especially during these cold winter months!

Visit **worcesterfellowship.org** and set up a donation!

## Hope for Housing special Fundraiser!

During the months of November and December, Panera is giving 20% rather than the regular 5% for all of their gift card sales to Hope for Housing.

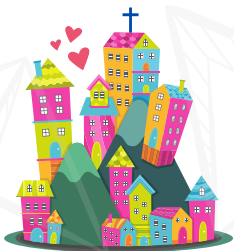


Cards are available every Sunday from Karen Allen.

Other cards available are from *Dunkin'*, *CVS*, *Big Y*, *Shaw's*, *Hannaford*, and *Stop & Shop*. Please let Karen know if you need a large number of cards (more than 4 of any one type) for your holiday gifts. This fundraiser helps to keep people in their homes during these difficult times.

## Volunteer Opportunities

### Help GPC get involved in our community!



Do you have ideas to get GPC involved in our community?

Have you considered joining our **Social Media Focus Group** led by Russ Vickstrom? Help GPC make a difference in our community!

For more details contact Russ at [rvickstrom@gmail.com](mailto:rvickstrom@gmail.com)

### Do you own a smartphone?

Please consider serving your church and the community by becoming part of GPC's Production Team.

We only have 3 volunteers and we desperately need more people to join! For more details contact Carolina at

[carolina@greendalepeopleschurc.org](mailto:carolina@greendalepeopleschurc.org)



## Sunday Scripture Readers!

We need Sunday scripture readers, if interested please contact our deacons:



**Chapel:** Nancy Cimato | [nancy4yoga@verizon.net](mailto:nancy4yoga@verizon.net)

**Sanctuary:** Bill Hackett | [bhackett@qbdstrategies.com](mailto:bhackett@qbdstrategies.com)

## Grow Spiritually

### Wednesday's Thoughts

Wednesdays on FB, YouTube and GPC website



Pastor Doug and Carolina talk about Saints! Episodes are available every other Wednesday on our website, FB, and YouTube channel. Do you have questions or topics that you'd like us to explore? send us an email to [Carolina@greendalepeopleschurch.org](mailto:Carolina@greendalepeopleschurch.org)

### Bible Studies

2nd & 4th Monday | 10:30 am | Conference Room

GPC offers 2 bible studies. *Women at the Well* on the second and fourth Mondays of each month at 10:30 am in the Conference Room of the church and Wednesday Study Group every Wednesday at 6:30 pm at the church library. All are welcome!

## Weekly Calendar

GPC office is open Monday-Thursday from 9 am to 3 pm

### Saturday, Dec. 11

5:30pm.....GPC Christmas Party | Fisher Hall

### Sunday, Dec. 12

9:30am.....Worship Service | Sanctuary, FB Live  
Coffee Fellowship hosted by Ellen Green

### Wednesday, Dec. 15

10:00am-12noon..... Food Pantry | Parking Lot Entry  
2:00pm-3:00pm.....Stewardship Team | Conference Room  
6:30pm..... Wednesday Study Group | Library

### Thursday, Dec. 16

10:00am..... Mustard Seed | Kitchen  
5:30pm.....Cub Scouts | Eden & Genesis Room

### Sunday, Dec. 19

9:30am .....Worship Service | Sanctuary, FB Live  
Christmas Coffee Fellowship hosted by Earline Desalvo

Please carry this with you or place it on your table or beside your bed. As you include the following names in your prayers remember that your brothers and sisters in faith are also praying with you.

Nancy Raphael	Don Wilbur	Karen Legere
Beverly	June Ayres	Robert Jewers
Janice	Dee Freeburn	Charlotte LeBlanc
Stephanie Kissiday	Patricia Harnois	Sheryll O'Brien
Jessica Angers	Laura Giurleo	Michael Nothe-Taylor
Jim & Marie Wilmot	Ray LeBlanc	Eddie Mekka
Brandon S.	Clara Carreno	
Teresa LaFleur	Karen Allen	
Don Hebb	Sandy Grayson	

Connect with GPC members by sending a postcard and telling them how much you care!

*Barbara Veinot*  
Holy Trinity  
300 Barber Ave. Room #211  
Worcester, MA 01606

*Shirley Bodreau*  
1 Inwood Road  
Auburn, MA 01501

## DECEMBER BIRTHDAYS

12.01 Sherrill McKeon	12.15 Diane Feeley	12.24 Heather Dubrule
12.02 Janet Ordway	12.15 Kaitlyn Litcht	12.26 Chloe Warden
12.02 Joseph Clancy Jr.	12.16 Al Wasilewski	12.29 Charlie Whittall Jr.
12.04 Marion McLaren	12.16 Jennifer Allen	12.30 Nancy White
12.08 Robert Knott	12.18 Linda Griffn	12.31 Ellen Green
12.09 Amy Freeburn	12.21 Mary Donev	
12.11 David Guirleo	12.24 Frances Langille	

## Ministering to the Congregation

### Our Team

**Pastor:** Rev. Dr. Douglas Cederberg

[RevDoug@GreendalePeoplesChurch.org](mailto:RevDoug@GreendalePeoplesChurch.org)

**Music Director:** Annie Arsenault

[Annie@GreendalePeoplesChurch.org](mailto:Annie@GreendalePeoplesChurch.org)

**Communications Coordinator:** Carolina Mata

[Carolina@GreendalePeoplesChurch.org](mailto:Carolina@GreendalePeoplesChurch.org)

**Custodian:**

[Custodiane@GreendalePeoplesChurch.org](mailto:Custodiane@GreendalePeoplesChurch.org)

### Deacons

[Deacons@GreendalePeoplesChurch.org](mailto:Deacons@GreendalePeoplesChurch.org)

### Care Ministry

[CareMinistry@GreendalePeoplesChurch.org](mailto:CareMinistry@GreendalePeoplesChurch.org)

### Food Pantry

[FoodPantry@GreendalePeoplesChurch.org](mailto:FoodPantry@GreendalePeoplesChurch.org)

### Camp Selah Use

**Camp Selah Liaison:** Nancy White

[Tenants@GreendalePeoplesChurch.org](mailto:Tenants@GreendalePeoplesChurch.org)

[mormor.nw@gmail.com](mailto:mormor.nw@gmail.com)

### Governing Board

**Chair:** Dennis Christo

[BoardChaire@GreendalePeoplesChurch.org](mailto:BoardChaire@GreendalePeoplesChurch.org)

**Vice-Chair:** Bob Converse

[ViceChaire@GreendalePeoplesChurch.org](mailto:ViceChaire@GreendalePeoplesChurch.org)

**Clerk:** Kim Paré

[Clerke@GreendalePeoplesChurch.org](mailto:Clerke@GreendalePeoplesChurch.org)

**Finances:** Charlie Whittall

[Treasurere@GreendalePeoplesChurch.org](mailto:Treasurere@GreendalePeoplesChurch.org)

**Facilities:** Dave Raphael

[dr@raphael.com](mailto:dr@raphael.com)

**Stewardship:** Dave Raphael [dr@raphael.com](mailto:dr@raphael.com) and

Charlie Whittall: [Treasurere@GreendalePeoplesChurch.org](mailto:Treasurere@GreendalePeoplesChurch.org)

### Membership

**Membership Liaison:** Nancy White

[mormor.nw@gmail.com](mailto:mormor.nw@gmail.com)

Please like, follow & subscribe



# GREENDALE PEOPLES CHURCH

## DECEMBER 2021

SUN	MON	TUE	WED	THU	FRI	SAT
			<b>1</b> 10:00 am <b>Food Pantry</b> Parking entry  6:30 pm <b>Wed. Study Group</b> Library	<b>2</b> 5:30 pm - 7:30 pm <b>Cub Scouts</b> Eden/Gen. Room	<b>3</b> Office closed  7:30 am-8:30pm <b>Fellowship Group</b> Calliope Theater	<b>4</b> Office closed  9:00am-12:00pm <b>Mini Fair Set-Up</b> Fisher Hall
<b>5</b> 9:00am <b>Mini Fair</b> Fisher Hall 9:30 am <b>Worship Service</b> Sanctuary 9:30 am <b>Virtual Worship</b>	<b>6</b> 6:00pm-8:00pm <b>NA Group</b> Fisher Hall  6:30pm <b>Deacons Mtg</b> Conference Room	<b>7</b>	<b>8</b> 10:00 am <b>Food Pantry</b> Parking entry  6:30 pm <b>Wed. Study Group</b> Library	<b>9</b> 5:30 pm - 7:30 pm <b>Cub Scouts</b> Eden/Gen. Room	<b>10</b> Office closed	<b>11</b> Office closed  5:30pm-9:30 pm <b>GPC Christmas Party</b> Fisher Hall
<b>12</b> Mustard Seed Offering 9:30 am <b>Worship Service</b> Chapel 9:30 am <b>Virtual Worship</b>	<b>13</b> 10:30 am <b>Women at the Well</b> Conference Room	<b>14</b>	<b>15</b> 10:00 am <b>Food Pantry</b> Parking entry 2:00 pm <b>Stewardship mtg</b> Conference Room 6:30 pm <b>Wed. Study Group</b> Library	<b>16</b> 10am - 12 pm <b>Mustard Seed</b> Kitchen  5:30 pm - 7:30 pm <b>Cub Scouts</b> Eden/Gen. Room	<b>17</b> Office closed	<b>18</b> Office closed  1:00pm - 4:00pm <b>Christmas Coffee Fellowship Prep.</b> Kitchen
<b>19</b> 9:30 am <b>Worship Service</b> Sanctuary 9:30 am <b>Virtual Worship</b> 10:30 am <b>Christmas Coffee Fellowship</b>	<b>20</b>	<b>21</b>	<b>22</b> 10:00 am <b>Food Pantry</b> Parking entry  6:30 pm <b>Wed. Study Group</b> Library	<b>23</b> 10:30am-12:00pm <b>Sandwiches</b> <b>All Saints Church</b>  5:30 pm - 7:30 pm <b>Cub Scouts</b> Eden/Gen. Room	<b>24</b> Office closed  Christmas Eve  5:30pm <b>Christmas Eve Service   Sanctuary</b>	<b>25</b> Office closed  Christmas Day
<b>26</b> 9:30 am <b>Worship Service</b> Chapel 9:30 am <b>Virtual Worship</b>	<b>27</b>	<b>28</b> 6:30 pm <b>Governing Board</b> 2nd CR	<b>29</b> 10:00 am <b>Food Pantry</b> Parking entry  6:30 pm <b>Wed. Study Group</b> Library	<b>30</b> Office Special Hrs 9:00 am-12 noon	<b>31</b> New Year's Eve	